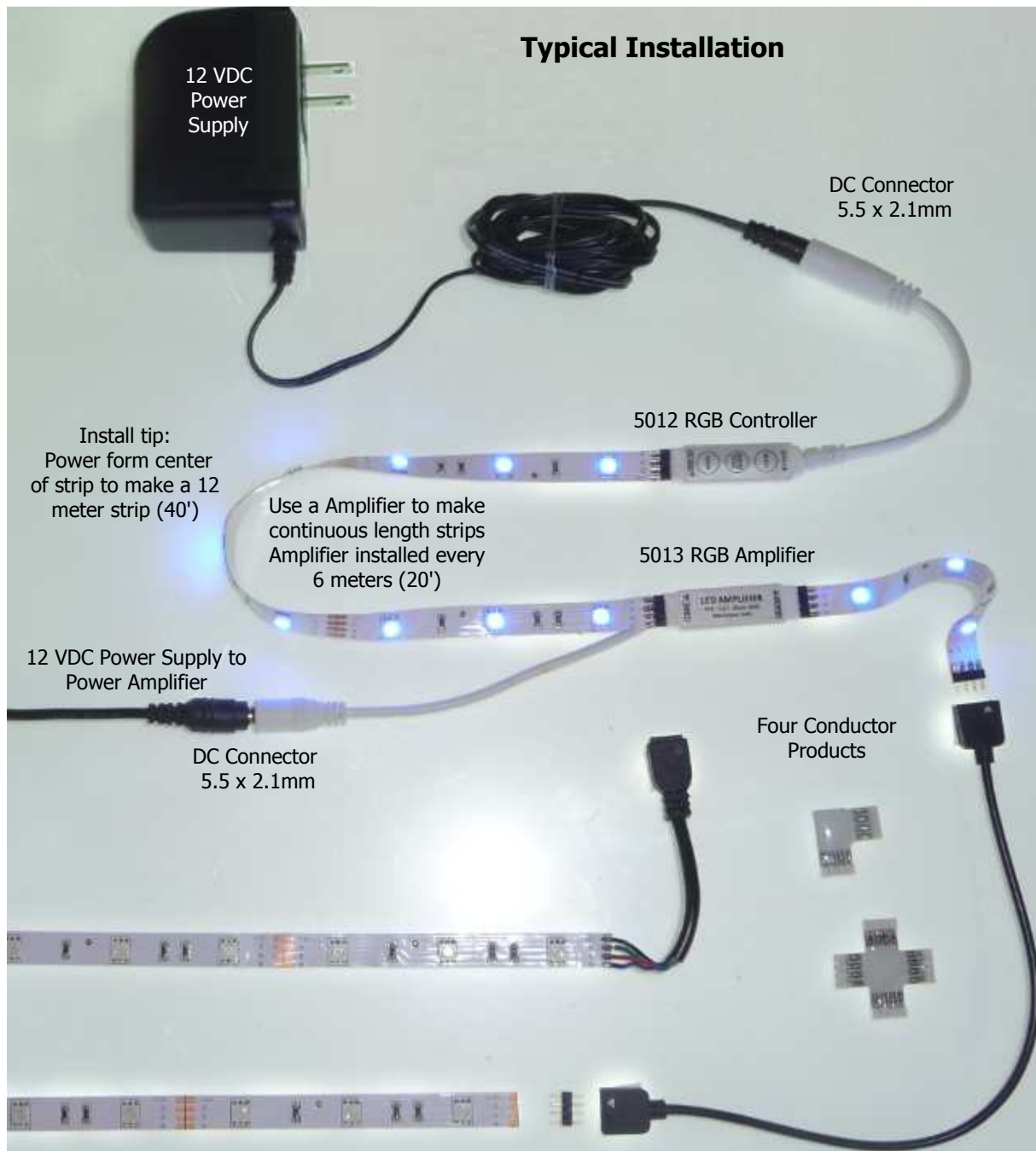
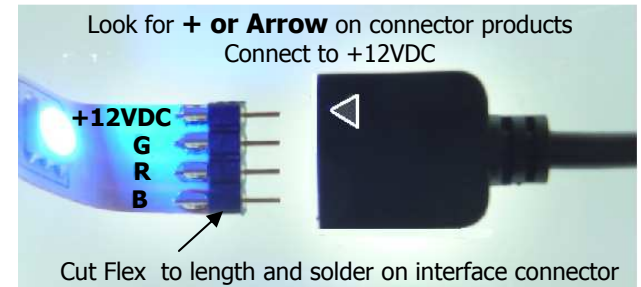


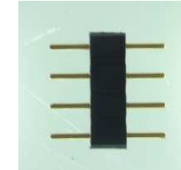
## Typical Installation



## Four Conductor Cable Options



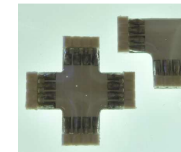
## Interface Connector



Solder to Flex Strip or use to connect Interconnect Cables and Controllers

**5001-** Bag of 100

**5002-** Bag of 6



## Junction Blocks

**5003-** Right Angle Block

**5004-** four way angle Block



## Four Conductor Interconnect Cables

**5005-** 20 cm 26AWG

**5006-** 100 cm 26AWG

**5007-** 250 cm 26AWG

**5008-** 20 cm 22AWG

**5009-** 100 cm 22AWG

**5010-** 250 cm 22AWG



## Controller Cable

Solder to Flex Strip or use connect to Controller products

**5011-** 20 cm 22AWG